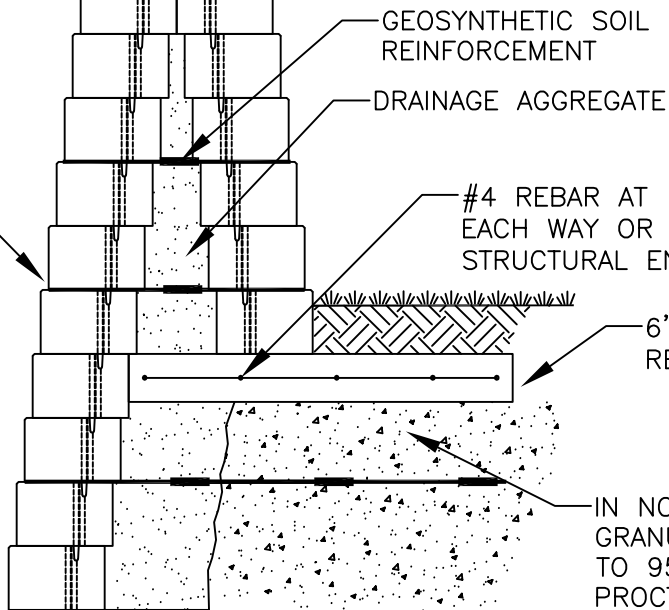


CAP ADHERED W/ CONCRETE ADHESIVE
CONSISTING OF SEGMENTED PRE-CAST, STONE,
OR MODIFIED VERSA-LOK CAP UNITS

VERSA-LOK SQUARE FOOT
CONCRETE UNITS



GEOSYNTHETIC SOIL
REINFORCEMENT

DRAINAGE AGGREGATE

#4 REBAR AT 12" SPACING
EACH WAY OR PER PROJECT
STRUCTURAL ENGINEER'S DIRECTION

6"X48" CONTINUOUS
REINFORCED FOUNDATION

IN NORTHERN CLIMATES, SELECT
GRANULAR BACKFILL COMPACTED
TO 95% OF MAXIMUM STANDARD
PROCTOR DENSITY SHOULD BE
USED DIRECTLY BELOW THE SLAB
TO MINIMIZE FROST HEAVE

TYPICAL SECTION—BACK TO BACK

SQUARE FOOT UNITS—BACK TO BACK TOP OF WALL

SCALE: NONE

THESE PRELIMINARY DETAILS ARE INTENDED AS AN AID IN DESIGNING ATTRACTIVE, DURABLE RETAINING WALLS WITH VERSA-LOK UNITS. FINAL DETERMINATION OF THE SUITABILITY OF ANY INFORMATION OR MATERIAL FOR THE USE CONTEMPLATED, AND ITS MANNER OF USE, IS THE SOLE RESPONSIBILITY OF THE USER. A FINAL PROJECT SPECIFIC DESIGN SHOULD BE PREPARED BY A QUALIFIED, LICENSED, PROFESSIONAL ENGINEER.



VERSA-LOK®
Retaining Wall Systems

(800)770-4525 fax(651)770-4089
6348 Hwy36 Ste1, Oakdale,MN 55128 **Solid Solutions™**

VERSA-LOK SQUARE FOOT DETAILS

BACK TO BACK TOP OF WALL

SCALE: 1/2"=1'

DRAWN BY: PPS

CHECKED BY:

DATE: 10/2007

DWG. NO. if back to back tow